



COSMI



Stogit

Brugherio Gas Treatment Plant - Italy JTV-LTS (Low Temperature Separator) Technology

TECHNICAL DATA

The system is based on the pressure drop exploitation through a Joule-Thompson Valve.

During the pressure drop process the cooled gas makes the water and the gasolines condensate; these are separated by a Low Temperature Separator (LTS).

Gasolines are then reinjected in the reservoir through the existing well.

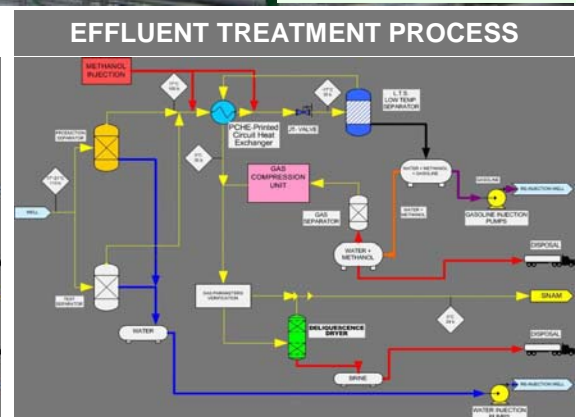
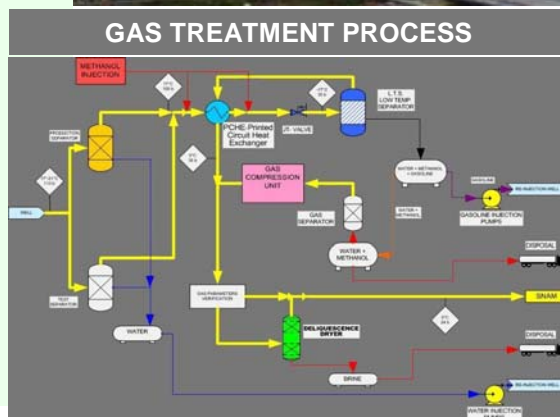
This kind of process produces ready-for-delivery gas (Dew Point and hydrocarbons).

The plant has been designed and built in compliance with the PED 97/23/CE Laws.



HSE

- no CO2 production in urban area
- small size plant in a protected area
- no gas flame
- separation water recovery
- methanol water and brine minimum disposal



Society of Petroleum Engineers

ATW SPE "Underground Gas Storage: TODAY & TOMORROW"
28-31 May 2007 Krakow, Poland